

Corporate Services Campus Conversations

Semester 2, 2022

Dr Stephen Weller, Chief Operating Officer

Ms Sharone Ciancio, Director Corporate Services

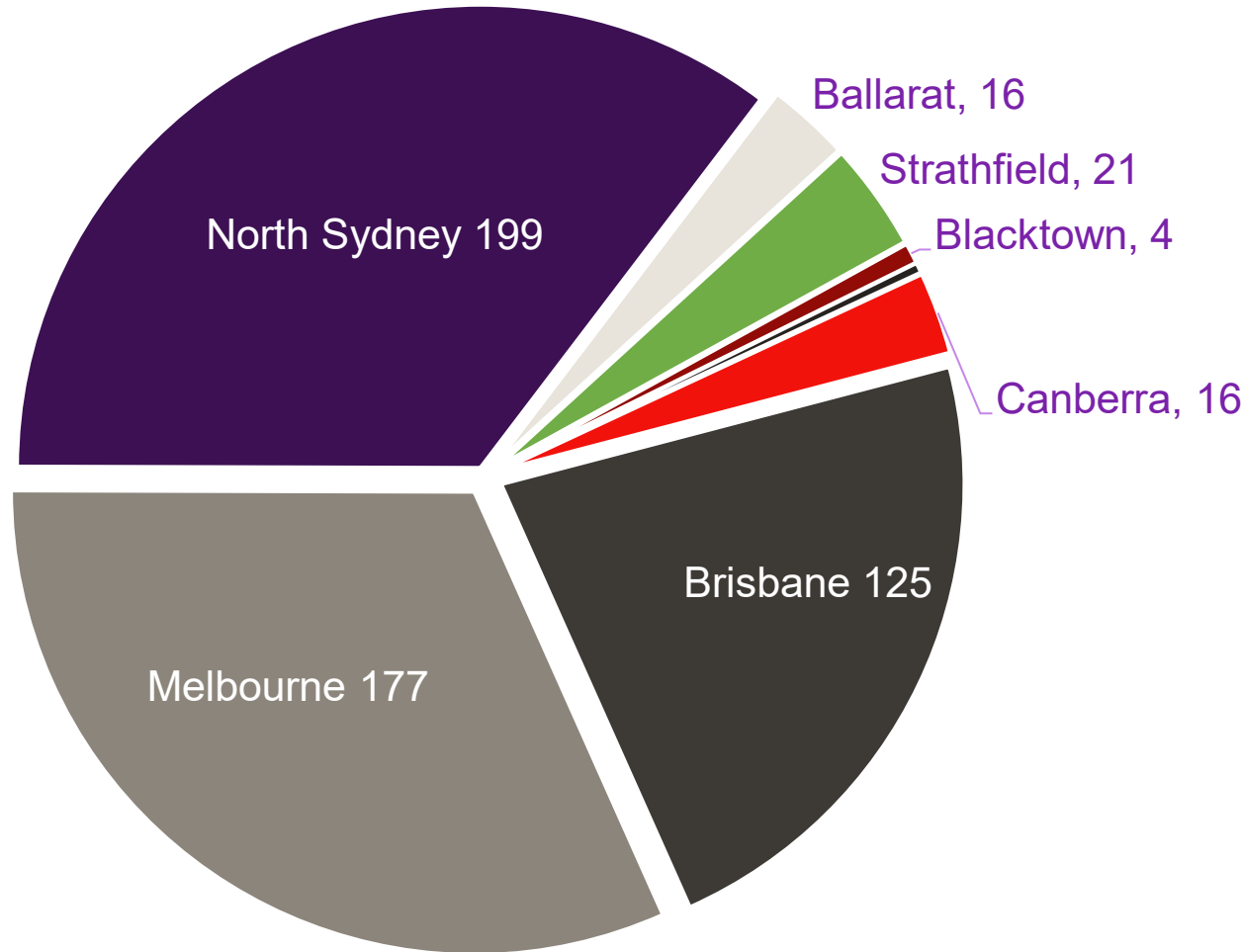
Overview

1. **Corporate Services Workforce**
2. **2022 MyVoice Survey**
3. **Recovery Transition**
4. **Enterprise Bargaining**
5. **Campus Developments**
6. **Stewardship Framework**
7. **Q&A**

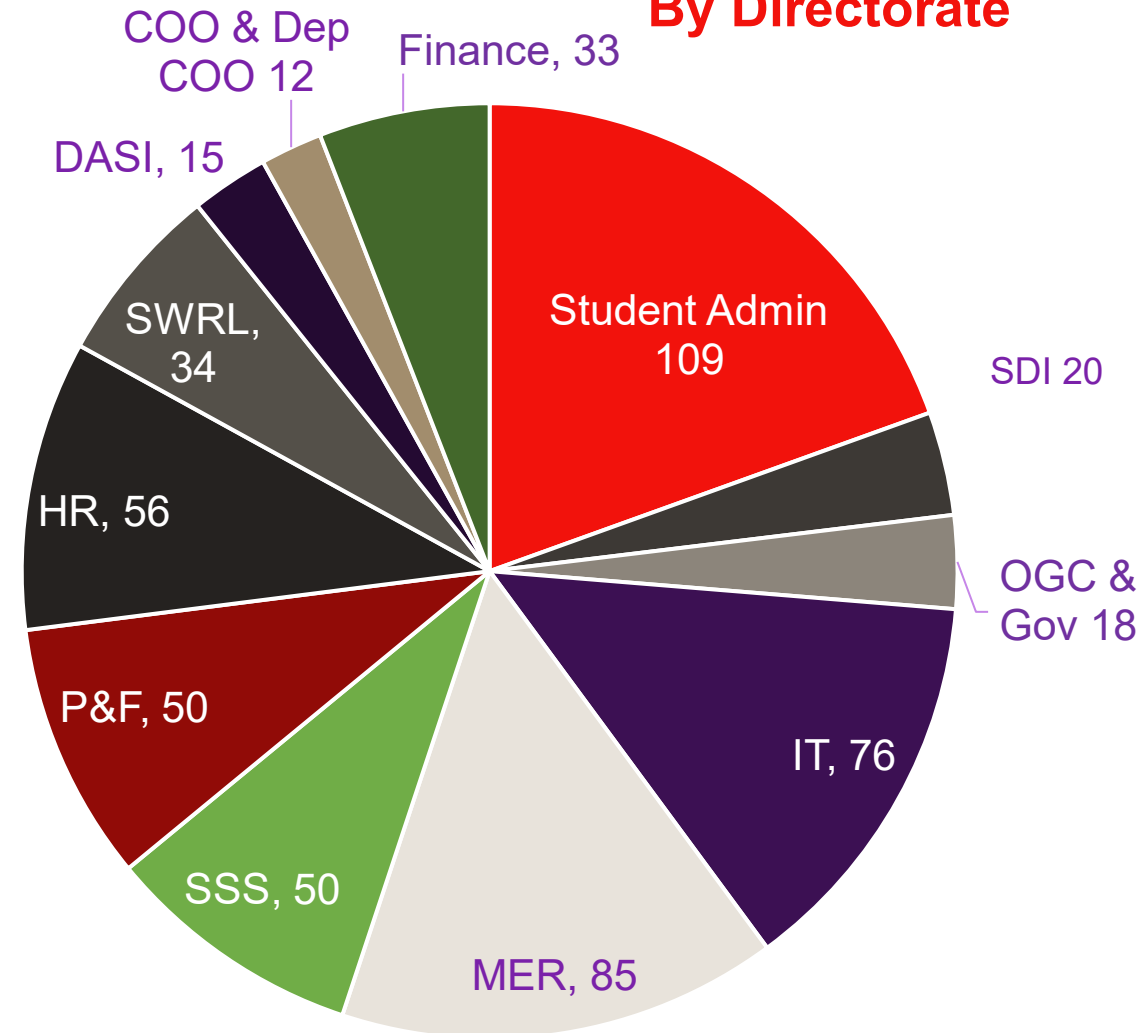
Corporate Services Workforce

Portfolio Head Count at 10 October 2022 = 558* (535 in 2020)

By Campus Location



By Directorate



* Includes continuing and fixed term staff, not vacancies or casuals

2022 myVoice Results

performance overview

legend

Low

<50%

Moderate

50<80%

High

>=80%

purpose

property

peace

participation

people

university

other

organisation
direction

mission & values

stewardship

catholic intellect
trad

behaviours &
ethics

respect

voice safety

facilities

resources

processes

technology

health & safety

workload

flexibility

recruitment &
selection

learning &
development

career
opportunities

involvement

performance
feedback

pay & benefits

recognition

organisational
leadership

executive
leadership

supervision

teamwork

cross-unit
cooperation

community
engagement

research

teaching

passion

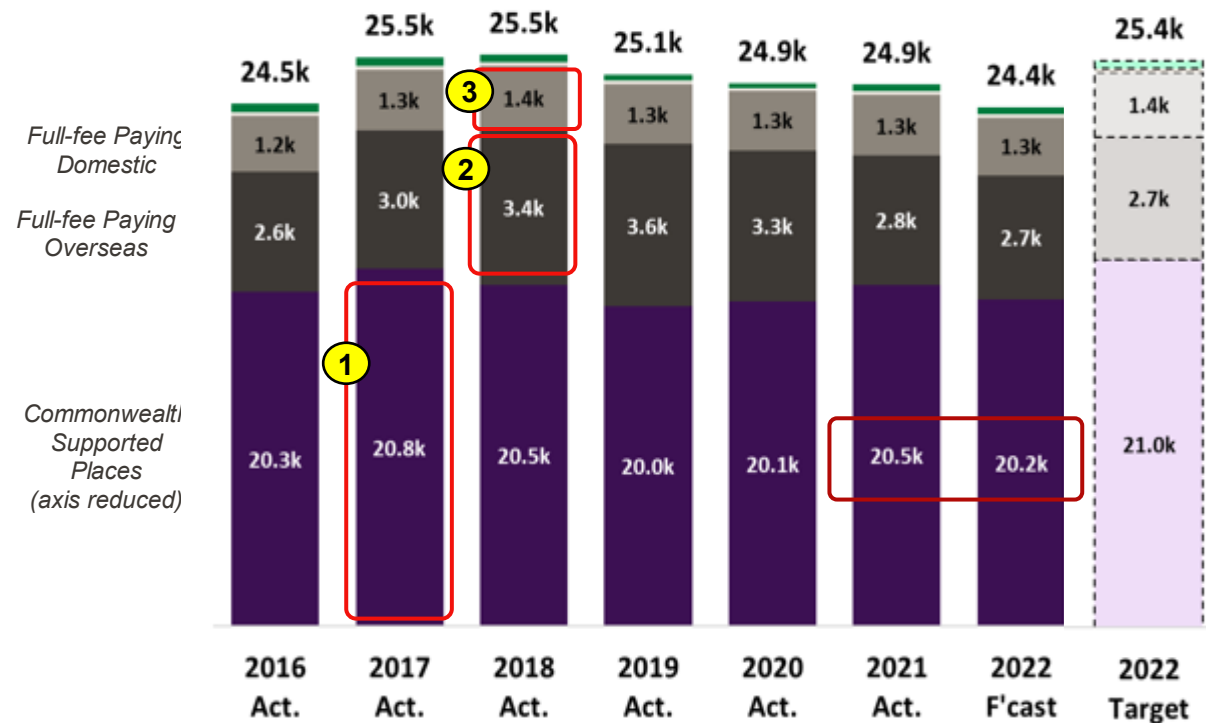
wellness

progress



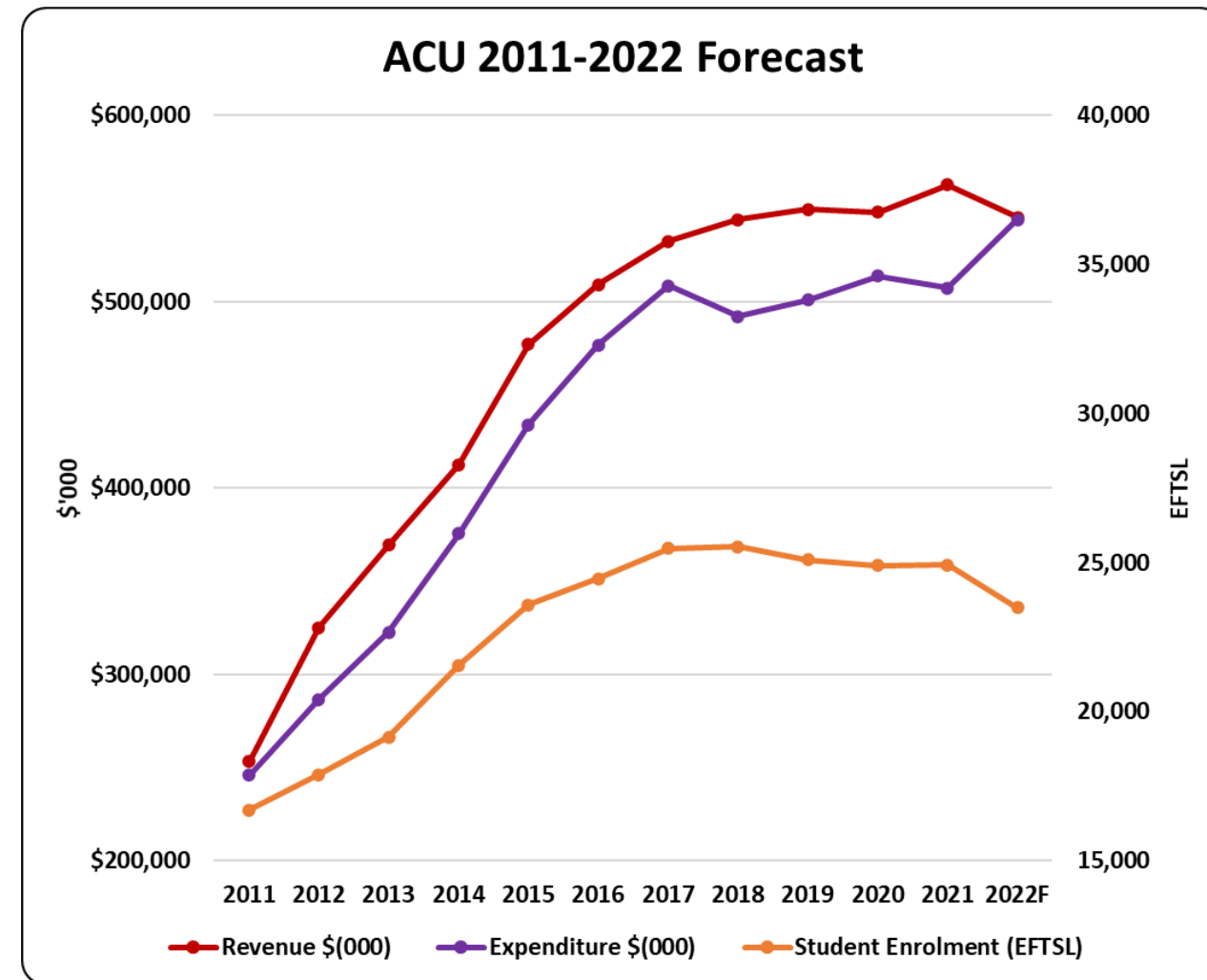
Recovery Transition

Student Enrolments



- ① CSP will be 600 EFTSL lower than 2017 peak
(Note: 2022 forecast to be 300 lower than 2021 and ~900 EFTSL below CGS Cap)
- ② FPO will be 700 EFTSL lower than 2018 peak
- ③ FPD will be 100 EFTSL lower than 2018 peak

Revenue and Expenditure



Enterprise Bargaining

- 20+ meetings of the joint bargaining team (management, CPSU & NTEU) since commencement in April 2021 (active bargaining since Aug 2021)
- Offering fair, sustainable and comprehensive package of staff benefits, including:
 - Pay increases between 13.65% and 15.6%
 - Increase representation of Aboriginal & Torres Strait Islander Australian peoples to 3.2% of workforce
 - 20% reduction in sessional academic staff
 - 200+ new part-time, ongoing academic positions (85 FTE)
 - Enshrining flexible work provisions and extending eligibility
 - Right to disconnect from work outside of working hours
 - 5 extra days of paid leave for declared national emergency or global pandemic
 - Enhancement of study support
- Agreement on almost 90% of clauses
- NTEU has provided a counter-offer that is currently under consideration
- NTEU has sought a protected action ballot, and it has been granted.
- Feedback invited - Workplace group and web page



Townsville - Leadership Centre



Blacktown - Library Fit Out

Campus Developments



Melbourne - Saint Teresa of Kolkata Building



22 Main Street - Blacktown



Proposed location - Rome

The Tracks



Forbes Student Centre - Ballarat



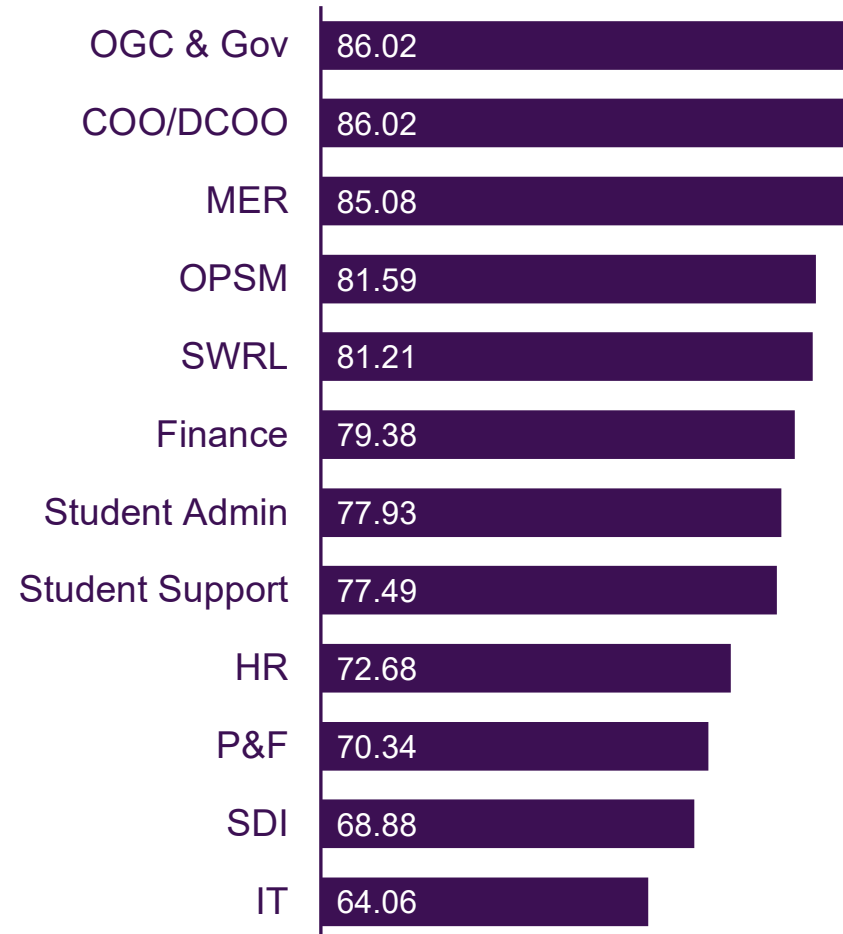
Signadou Building - Canberra

Stewardship Discovery Exercise - Portfolio Survey Results

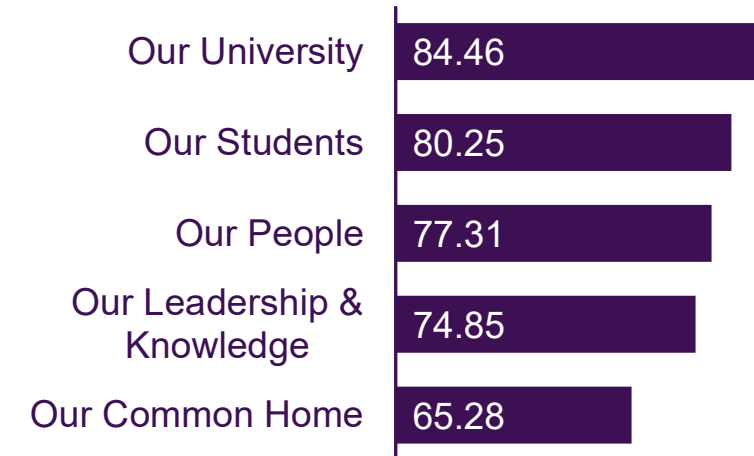
Directorates Response Rate (%)*

Directorates	Response rate (%)	Staff Numbers	Responses Received
SWRL	100.00	34	34
OGC & Gov	93.75	16	15
HR	93.48	46	43
SDI	89.47	19	17
OPSM	89.47	19	17
Student Admin	86.61	112	97
COO/DCOO	85.71	7	6
Student Support	82.14	56	46
IT	81.08	74	60
P&F	75.93	54	41
MER	71.08	83	59
Finance	59.18	49	29
TOTAL	81.55	569	464

Average agreement (%) by Directorate*

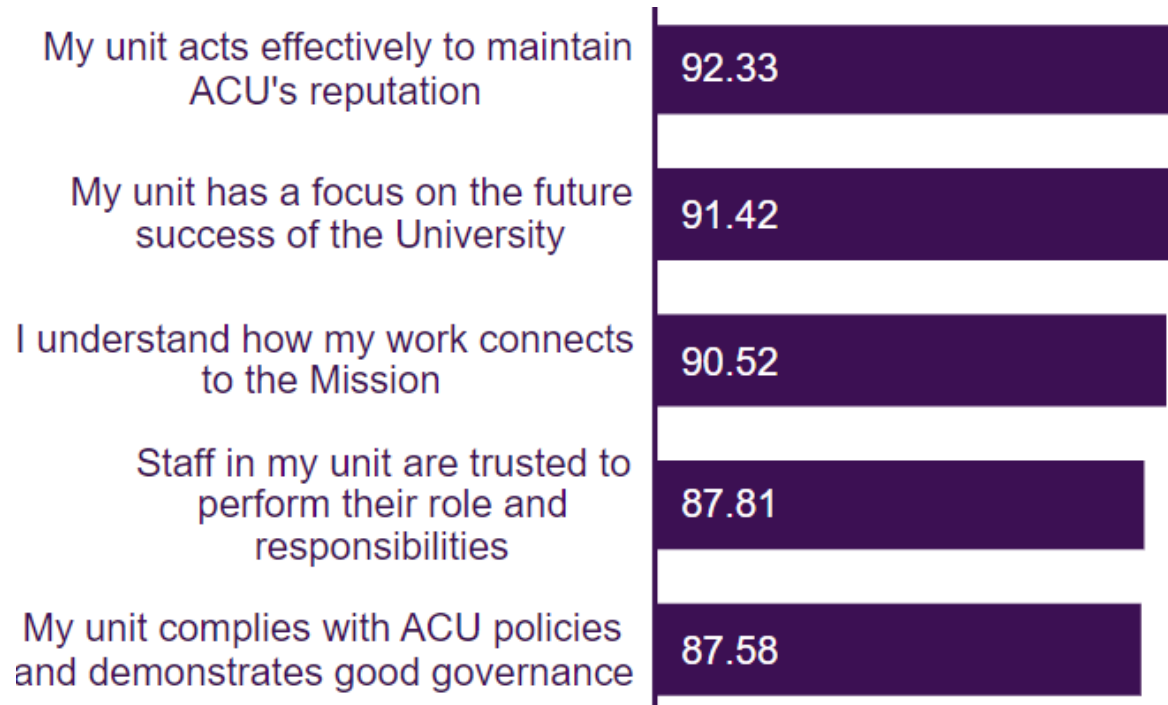


Average agreement (%) by Pillar*



Stewardship Discovery Exercise Survey Results

Questions with **highest** level of agreement (%)



Questions with **lowest** level of agreement (%)



Q&A

**What is your question,
comment or suggestion?**

Go to www.menti.com and
use the code **XXXXXX**