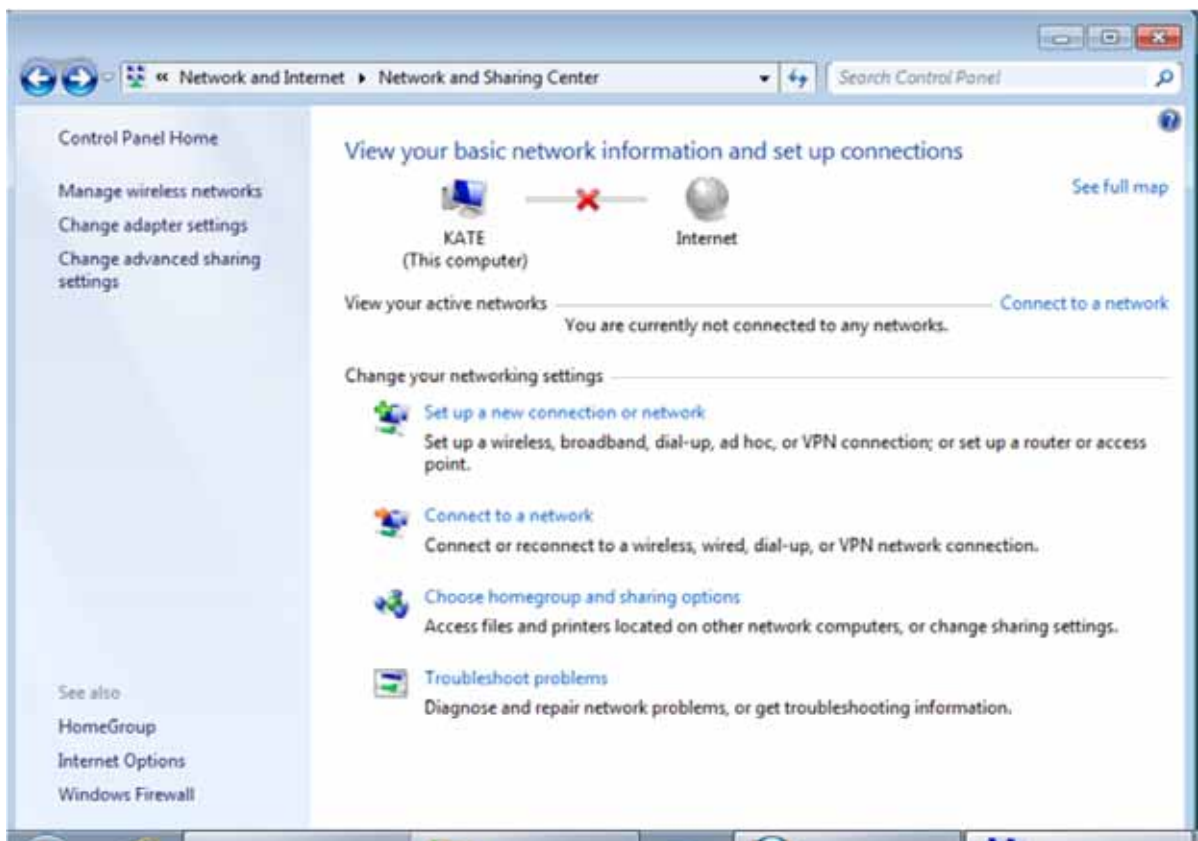


When prompted for your username, enter it in the following format

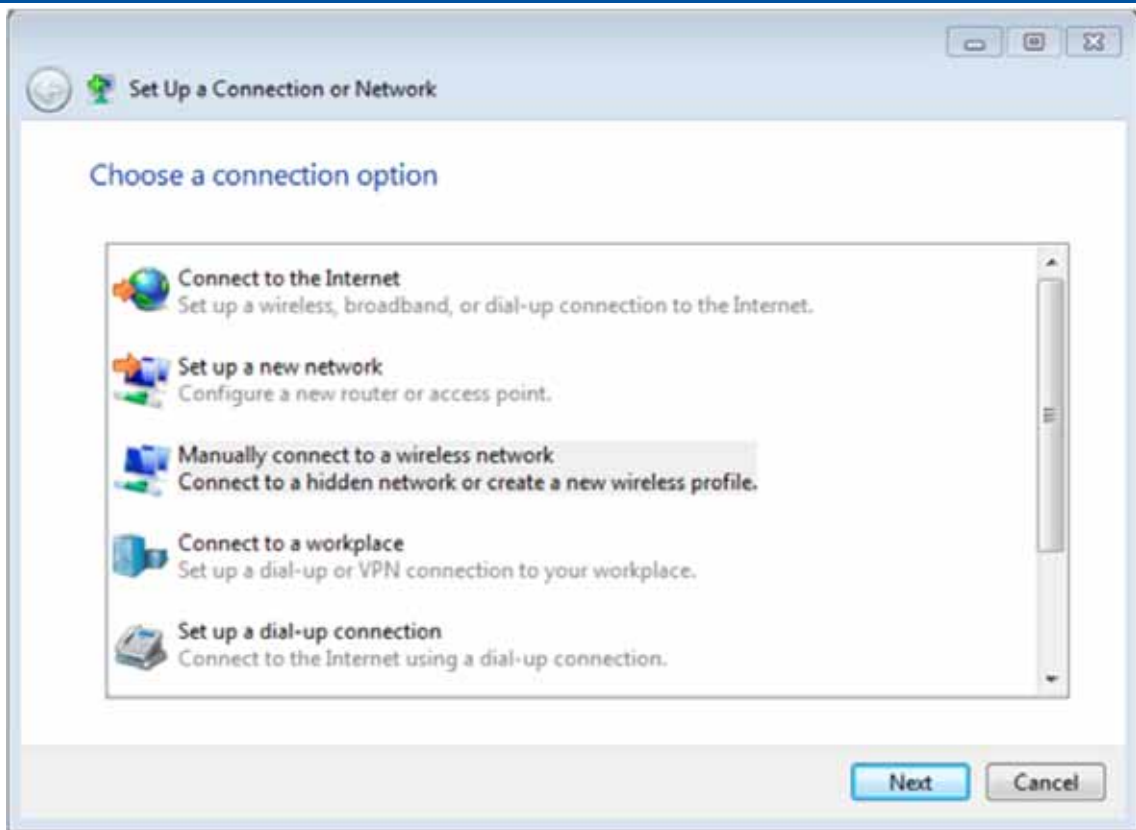
- ACU Student, s1234567@acu.edu.au
- ACU Staff, jodoe@acu.edu.au

Follow the steps below to connect a Windows 7 machine to Eduroam

1. Go to **Start**, then **Control Panel**, then **Network and Internet**, then **Network and Sharing Center**
2. From the list of tasks select **Setup a new connection or network**.



3. When asked to choose a new connection option select **Manually connect to a wireless network**



4. You will then be asked for information about the wireless network.



Manually connect to a wireless network

Enter information for the wireless network you want to add

Network name:

Security type:

Encryption type:

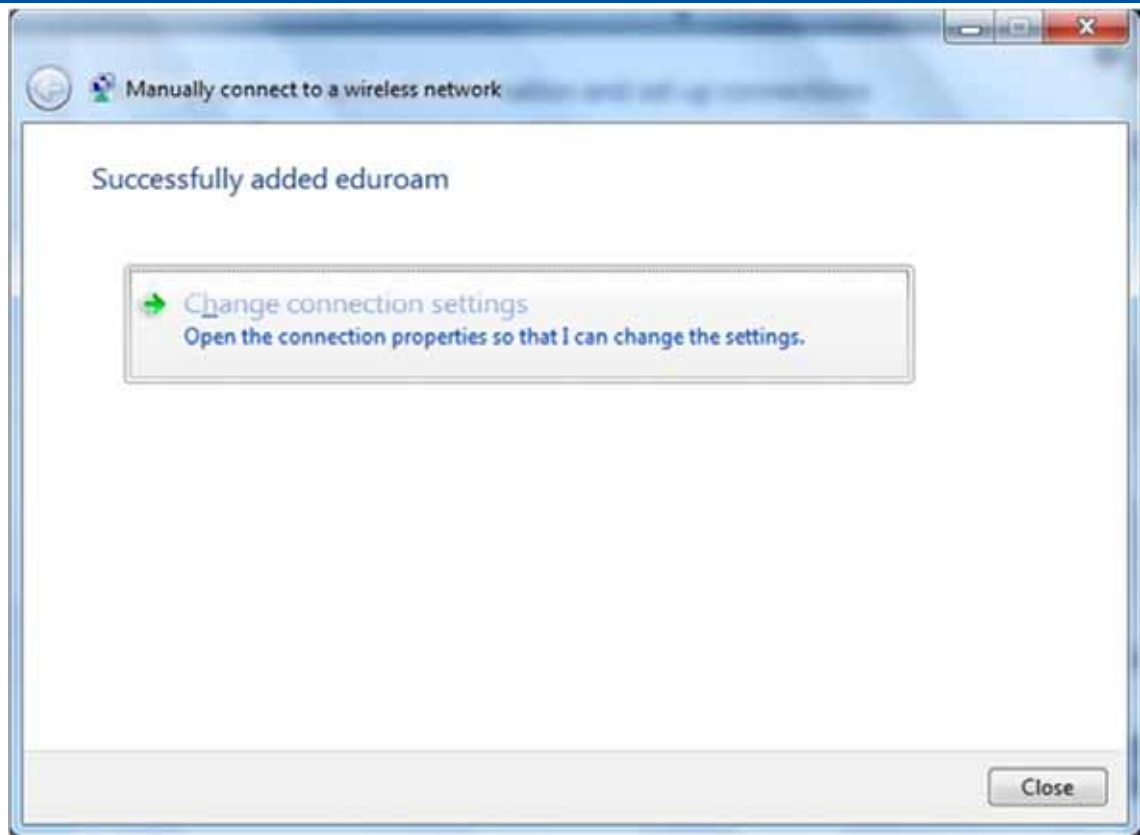
Security Key: Hide characters

Start this connection automatically

Connect even if the network is not broadcasting

Warning: If you select this option, your computer's privacy might be at risk.

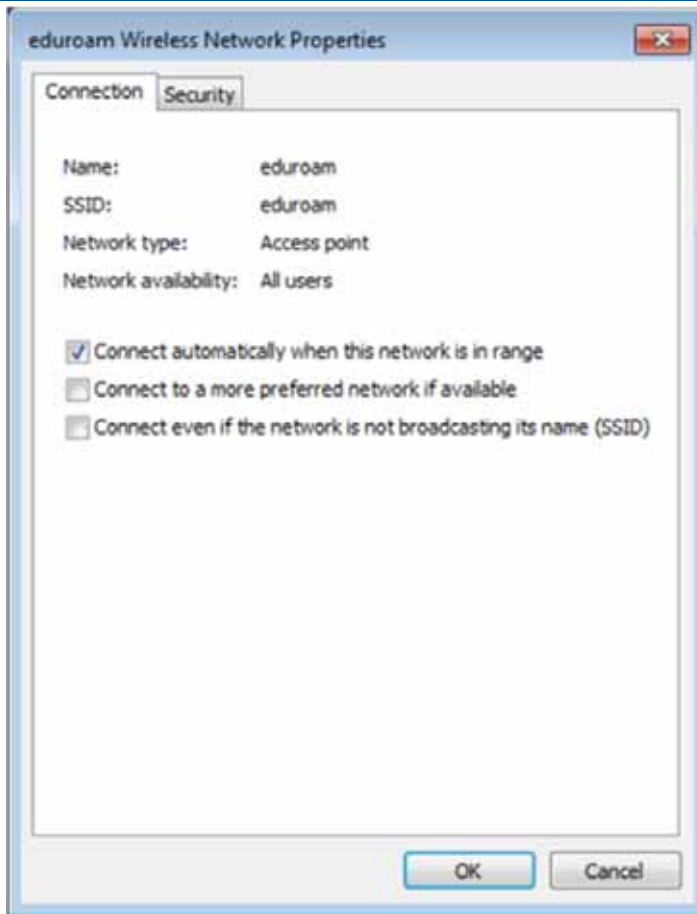
- In the **Network name** box, type *eduroam* (note the lower-case 'e').
 - From the drop-down lists:
 - For **Security type** choose *WPA2-Enterprise* (or *WPA-Enterprise* if your wireless card doesn't support WPA2)
 - For **Encryption type** choose *AES* (or *TKIP* if your wireless card doesn't support AES)
- Select **Next**. You should now be told that eduroam has been successfully added. Select **Change connection settings**.



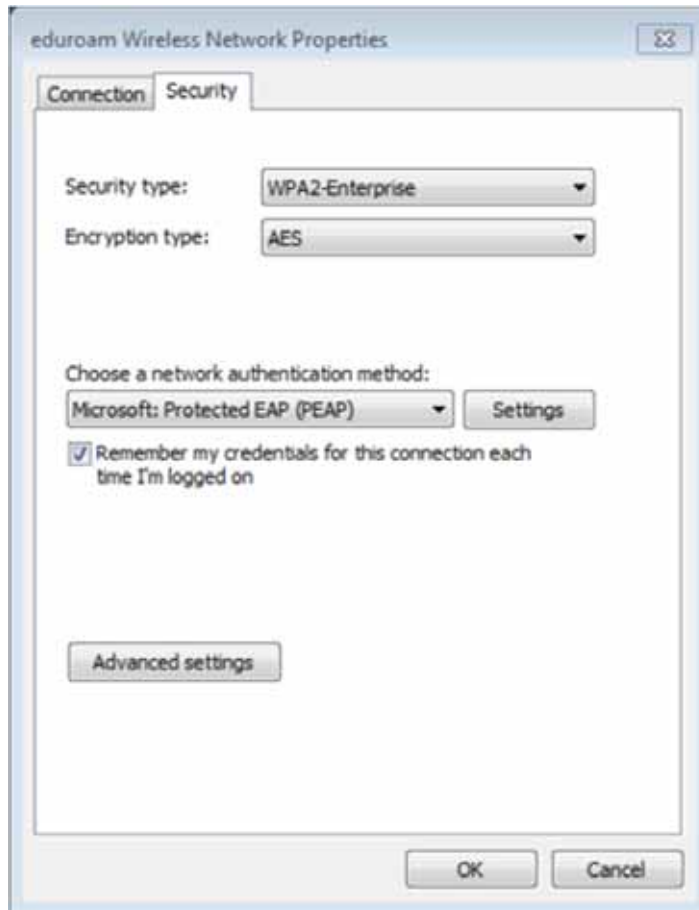
This will bring up the network wireless connection properties.

5. On the **Connection** tab uncheck **Connect to a more preferred network if available** The result should look like:-

Eduroam Windows 7 Setup Guide

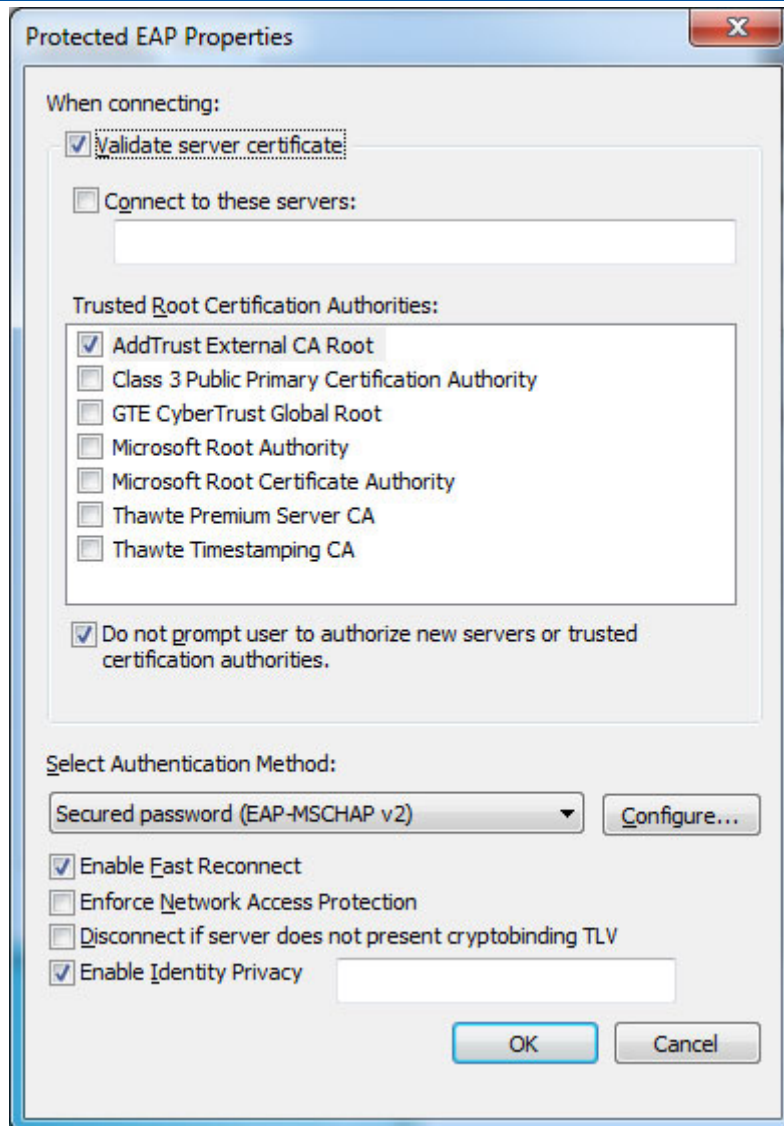


6. Select the **Security** tab.



- From the drop-down list for **Choose a network authentication method** choose **Protected EAP (PEAP)**
- Select **Settings...**

7. Complete the settings in this dialogue box as shown:

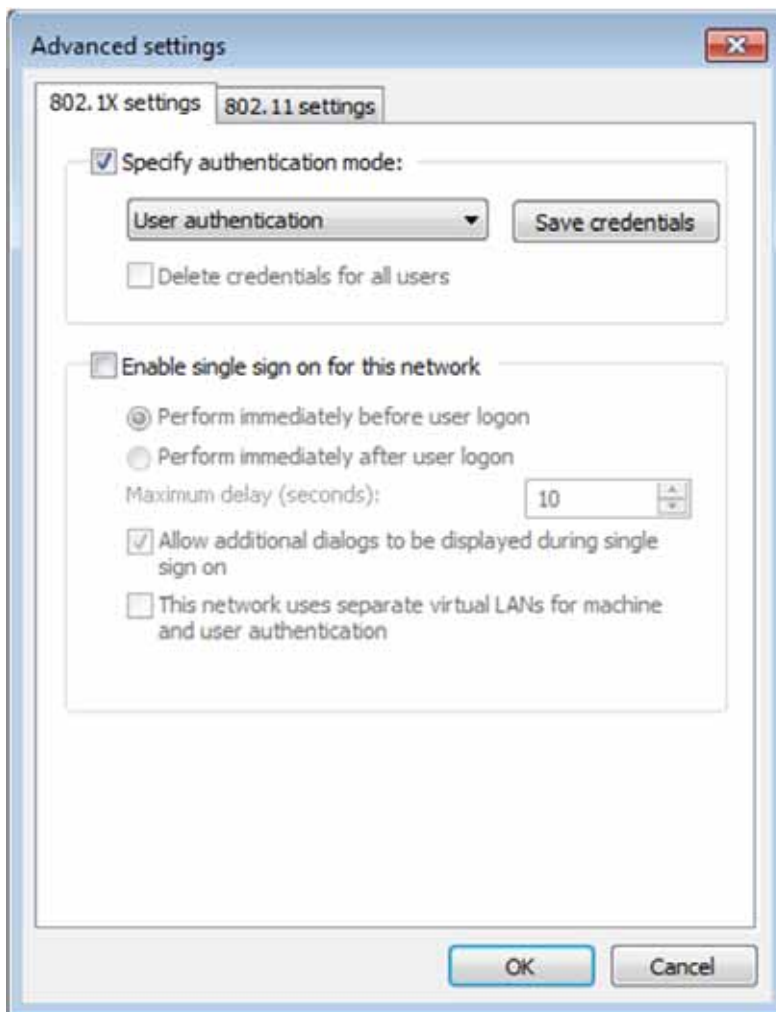


- Make sure **Validate server certificate** is ticked.
 - From the list of **Trusted Root Certification Authorities** find **AddTrust External CA Root** and tick the box next to it; If **AddTrust External CA Root** is **not** in the list of **Trusted Root Certification Authorities** then see [the step at the top of this page](#)
 - Tick the box next to **Do not prompt user to authorize new servers or trusted certification authorities**
 - Tick the box for **Enable Identity Privacy**.
8. The drop-down list under **Select Authentication Method** should already have **Secured password (EAP-MSCHAP v2)** selected - select the **Configure...** button next to it to open the *EAP MSCHAPv2 Properties* dialogue box:



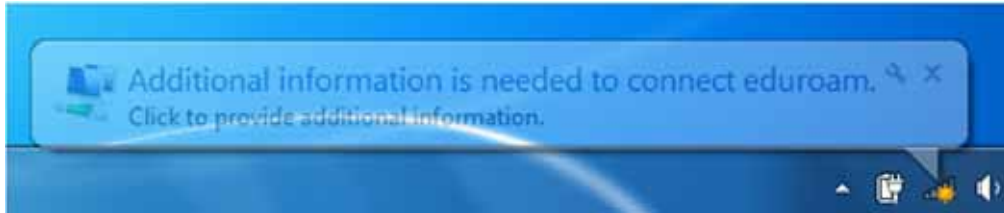
9. Untick the box next to **Automatically use my Windows logon name and password (and domain if any)** then select **OK**, then select **OK** to close the *Protected EAP Properties* dialogue box

10. Now, from the *Security* tab select **Advanced settings**



11. Check that you have the **802.1X** settings tab and, from the pull-down menu select **User authentication** then select **OK**

12. Now select the **802.11** settings tab. Check that **Enable Pairwise Master Key (PMK) caching** is **not** ticked.
13. Select **OK** to close all the various dialogue boxes
14. Select **Close** to close the "Manually connect to a wireless network" box.
15. After a short period of time, your computer should detect the *eduroam* wireless network and display a balloon, telling you **Additional information is needed to connect eduroam**.



16. Click in the balloon and a dialogue box will appear, prompting you for your credentials.
17. Complete the dialogue box using the *username and password*



- Your **User name** will be the **eduroam identifier** shown (typically your *username* followed by *@acu.edu.au*. e.g. *jodoe@acu.edu.au*).
- Your **Password** will be your windows domain password or your email password.

Select **OK**.