

Innovation in Technology Enhanced Learning Advisory Group

Innovation Process Flow

Version 2.0

Document purpose

This process flow recommends the general steps an ACU academic should take when wishing to innovate in technology enhanced learning (TEL) using a) a new technology / tool or, b) an existing LEO tool.

This process flow aims to function as a decision support tool for academics, who may have ideas how they want to innovate with technology in their teaching but are not sure how to proceed or where to seek assistance with bringing their idea to fruition.

Faculty consultation

This process flow emphasises the importance of consulting with and seeking advice from the relevant staff in your faculty, when considering a TEL innovation.

Interdependencies

When planning and implementing a TEL innovation, there will inevitably be a number of interrelationships and dependencies with faculty and organisational units within and external to ACU for e.g. school/faculty, LTC, IT, MER, Library, external vendor etc. Each innovation project differs in size, scope and complexity, so not all of these dependencies could be represented in this process flow. It is assumed that as part of any project planning, due consideration will be given to the potential impact of a project on all organisational areas at ACU.

Documents / forms / templates referred to in the process flow include:

- So you want to innovate using a tool outside of LEO?
- InTEL Proposal Form

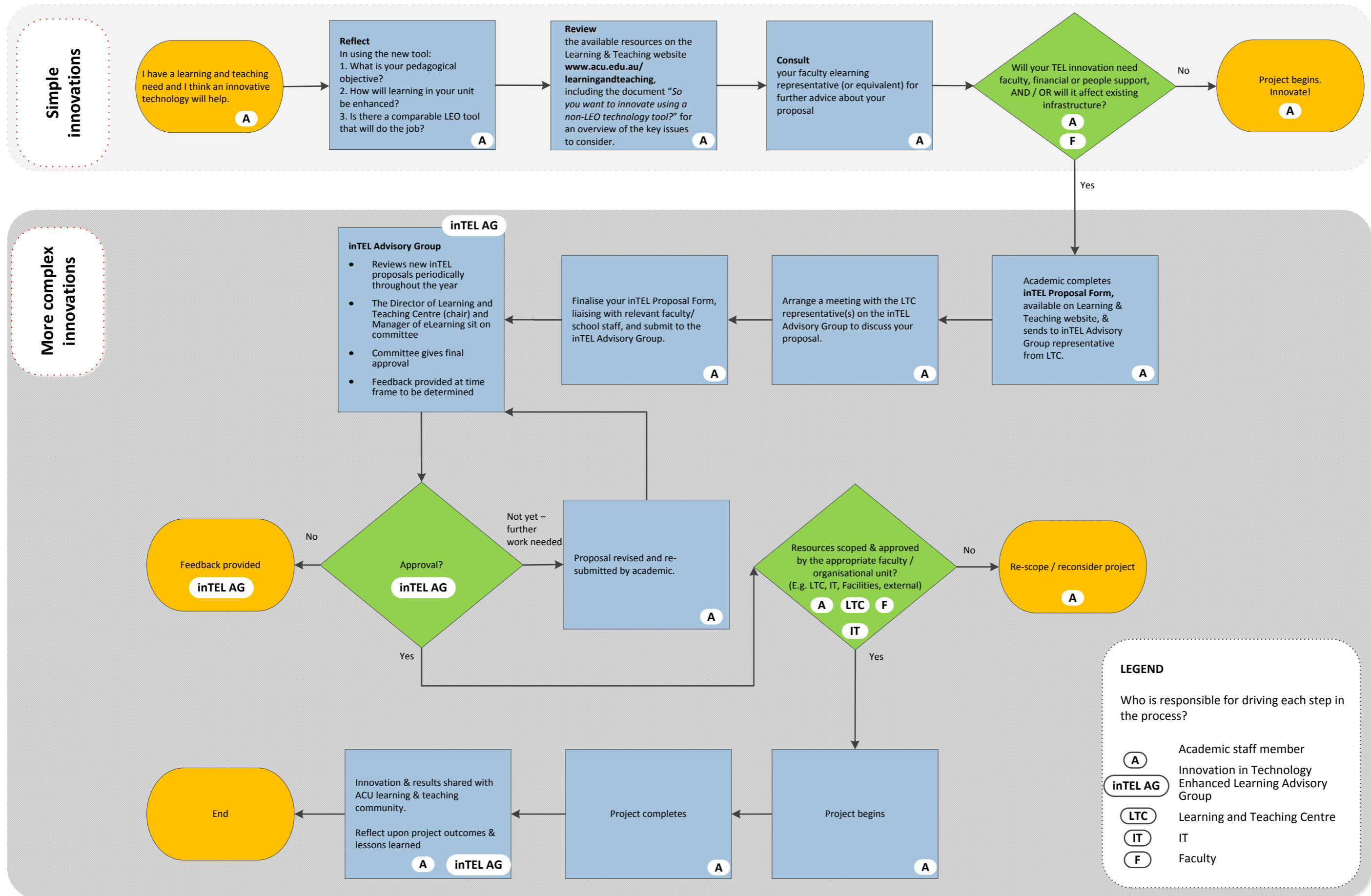
These documents are available on the ACU Learning and Teaching web site

http://www.acu.edu.au/staff/our_university/learning_and_teaching

Document Version

Version 1.0	2017	Endorsed by inTEL project reference group and ACU University Learning & Teaching Committee (ULTC)
Version 2.0	2018 January	Updated to incorporate feedback from faculty elearning representatives

This process flow proposes the steps ACU academics should follow when wishing to innovate in technology enhanced learning (TEL) using a new technology or tool.



LEGEND

Who is responsible for driving each step in the process?

- (A) Academic staff member
- (inTEL AG) Innovation in Technology Enhanced Learning Advisory Group
- (LTC) Learning and Teaching Centre
- (IT) IT
- (F) Faculty